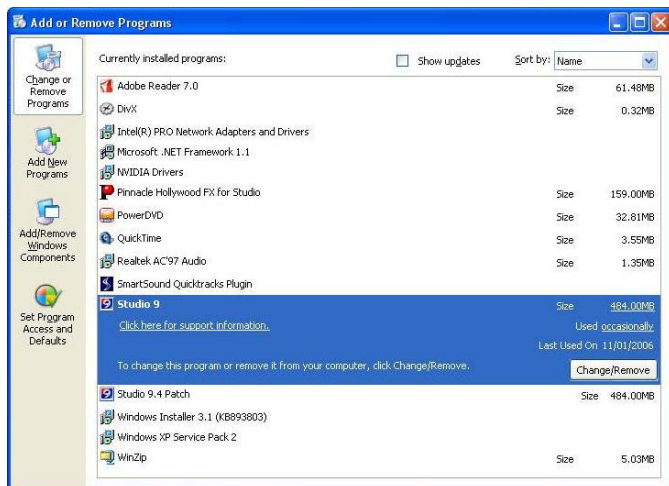


# HOW TO INSTALL YOUR STUDIO 10 PLUS UPGRADE CD

Thank you for purchasing Pinnacle Studio 10 Plus Upgrade, please follow these steps to successfully install your software.

**Step One:** Uninstall any previous version of Pinnacle Studio installed on your PC by going to Add/Remove Programs in Control Panel –



**Step Two:** After you have uninstalling the previous version you will be asked to restart you PC, click 'Yes'. If you are not asked to restart, please restart you PC manually.

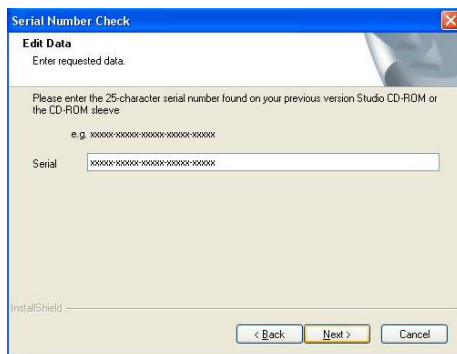
**Step Three:** Insert the Pinnacle Studio 10 installation CD into your CD/DVD drive and proceed with the installation.

**Step Four:** During the start of the software installation you will be prompted to insert your previous version of the Pinnacle Studio installation CD so it can confirm that you have the previous version. You will see the following screen –



**Step Five:** Once the software has confirmed that you have a previous version of Studio, the installation wizard will prompt you to insert the Pinnacle Studio 10 installation CD back into your CD/DVD drive.

**Step Six:** You will now see the following screen –



Before you input the previous Studio serial number, you are required to put in the previous Studio installation CD back in the CD/DVD drive otherwise it will not accept the previous Studio serial number. Put the Studio 10 installation CD back into the CD/DVD drive when the installation wizard has confirmed the previous Studio serial number.

**Step Seven:** You will now see the following screen –

Studio 10 Plus

Please enter the following information to personalize your software.

First Name \*

Last Name \*

Region \*

Email Address \*

Your account password and activation key for your FREE video effect plug-in will be e-mailed to this address.

I would like to receive emails regarding news and offers from Pinnacle Systems

Serial Number \*

You can find your product's serial number on a sticker on the installation disk's sleeve or on the disk itself.

\* Required

[Pinnacle Systems' Privacy Policy](#)

Put in your first name, last name, a valid email address and the serial number to continue with the installation.

**Step Eight:** The installation wizard will prompt you to insert discs two and three during the installation. Make sure you restart the PC when the software has been fully installed.

\*Don't forget to apply the latest software update which can be downloaded from [here](#).

For Customers requiring technical support you can contact Lako Pacific Help Desk on 1300 302 306 between the hours of Monday to Friday 9.30AM to 5.30PM EST or email – [helpdesk@lakopacific.com](mailto:helpdesk@lakopacific.com)